

## Double (Single) Crochet Border Swatch

Key - UK Terms (US Terms)	
Ch - Chain	Dc (Sc) - Double (Single)
SlSt (SS) - Slip Stitch	Dc (Sc) 3Inc - Double (Single) 3 Increase

Row 1 Chain 6, Work 1 Dc (Sc) in 2nd chain from hook, work 4 Dc (Sc).  
Stitch Count: 5.

Row 2 Ch1, turn, work 5 Dc (Sc). Stitch Count 5

Row 3-5 Repeat row 2.

### Border

Side 1 Start in edge of row 1. Ch1, work 2 Dc (Sc) in same space. Work 1 Dc (Sc) in side of each row next until the next corner. Work Dc (Sc) 3Inc in corner space.

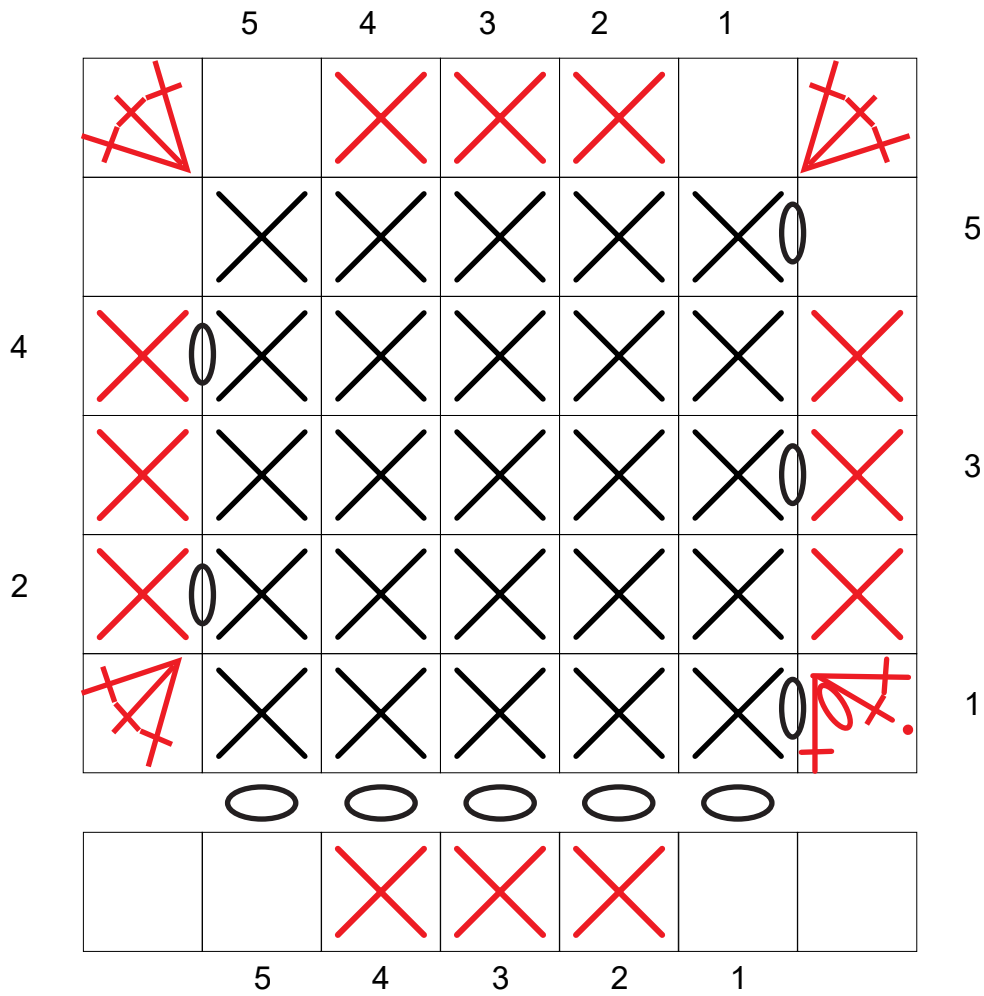
Side 2 3 Dc (Sc) along row, Dc (Sc) 3Inc in corner space.

Side 3 Work 1 Dc (Sc) in side of each row next until the next corner. Work Dc( Sc) 3Inc in corner space.


Side 4 3 Dc (Sc) along foundation chain, 1 Dc (Sc) in same space as the beginning 2 Dc (Sc).  
Close with a SlSt (SS) to 1st stitch


## Double (Single) Crochet Border Swatch


The red symbols represent border stitches. Join the yarn in row 1 and chain 1 to start the border.



### UK Terms (US terms)

 Dc (Sc) - Double (Single) Crochet

 Dc (Sc) 3 Increase

 S1St (SS)

## Half Treble (Half Double) Crochet Border Swatch

This swatch has a turning chain of 2 which is counted as a stitch. However - I've also started in the 1st stitch instead of skipping it.

Key - UK Terms (US Terms)		
Ch - Chain	Dc (Sc) - Double (Single)	Htr (Hdc) - Half Treble (Half Double)
SlSt (SS) - Slip Stitch	Dc (Sc) 3Inc - Double (Single) 3 Increase	

Row 1 Chain 7, Work 1 Htr (Hdc) in 3rd chain from hook, work 4 Htr (Hdc). Stitch Count: 6.

Row 2 Ch2, turn, start in 1st stitch, work 6 Htr (Hdc). Stitch Count: 5.

Row 3-5 Repeat row 2.

### Border

Side 1 Start in edge of row 1. Ch1, work 2 Dc (Sc) in same space. Alternate 2 Dc (Sc) in 1 row, 1 Dc (Sc) in next row, until the next corner. Work Dc (Sc) 3Inc in corner space.

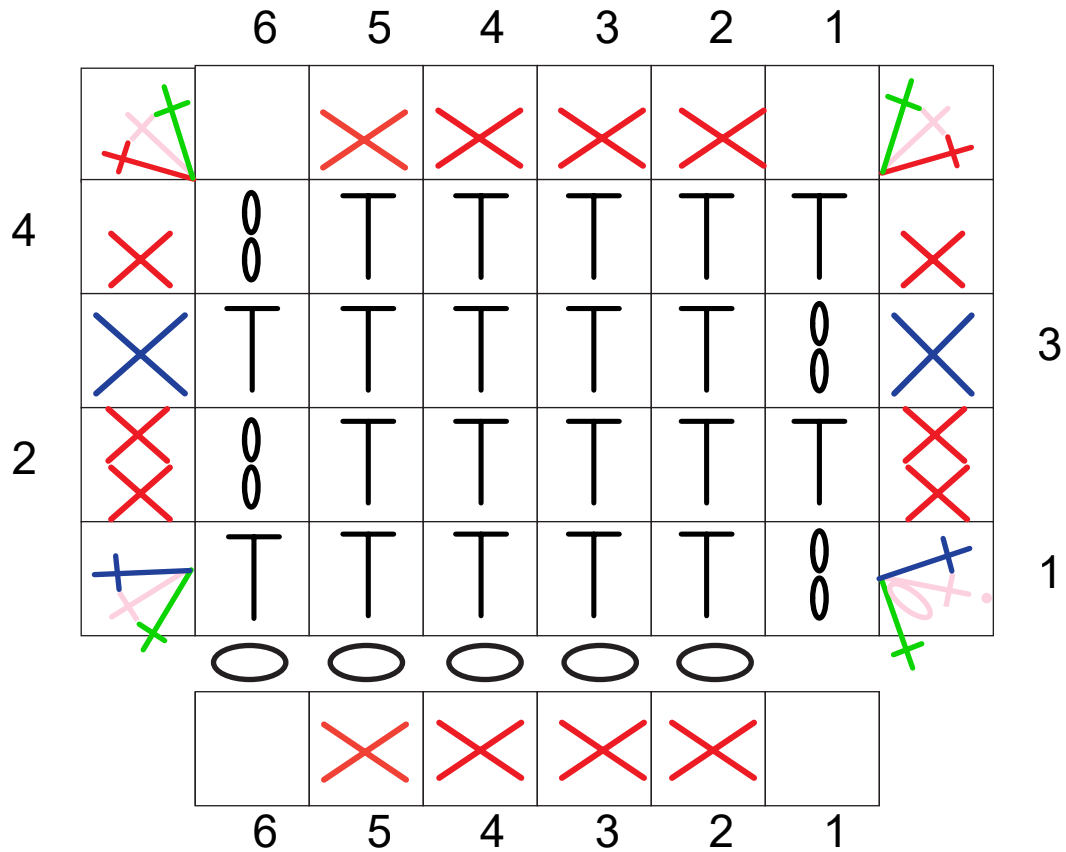
Side 2 4 Dc (Sc) along row, Dc (Sc) 3Inc in corner space.

Side 3 Alternate 2 Dc (Sc) in 1 row, 1 Dc (Sc) in next row, until the next corner. Work Dc (Sc) 3Inc in corner space.

Side 4 4 Dc (Sc) along foundation chain, 1 Dc (Sc) in same space as the beginning 2 Dc (Sc). Close with a Slst (SS) to 1st stitch.

## Half Treble (Half Double) Crochet Border Swatch

The red symbols represent border stitches. Join the yarn in row 1 and chain 1 to start the border.



### Key - UK Terms (US Terms)

- |   |                                   |                    |
|---|-----------------------------------|--------------------|
| Chain   | Dc (Sc) - Double (Single) Crochet | 3 Dc (Sc) Increase |
| Htr (Hdc) - Half Treble (Half Double) Crochet |                                   | Slst (SS)          |

# Treble (Double) Crochet

## Border Swatch

Tr(Dc) is made with a turning chain of 3. This is counted as a stitch.

Key - UK Terms (US Terms)		
Ch - Chain	Dc (Sc) - Double (Single)	Tr(Dc) - Treble (Double)
Slst (SS) - Slip Stitch	Dc (Sc) 3Inc - Double (Single) 3 Increase	

Row 1 Chain 9, Work 1 Tr (Dc) in 4th chain from hook, work 5 Tr (Dc).  
Stitch Count: 6.

Row 2 Ch3, turn, work 6 Tr (Dc). Stitch Count 6.

Row 3-4 Repeat row 2

### Border

Side 1 Start in row 1. Ch1, work 2 Dc (Sc) in same space. Work 2 Dc (Sc) in side of each row, until the next corner. Work Dc (Sc) 3Inc in corner space.

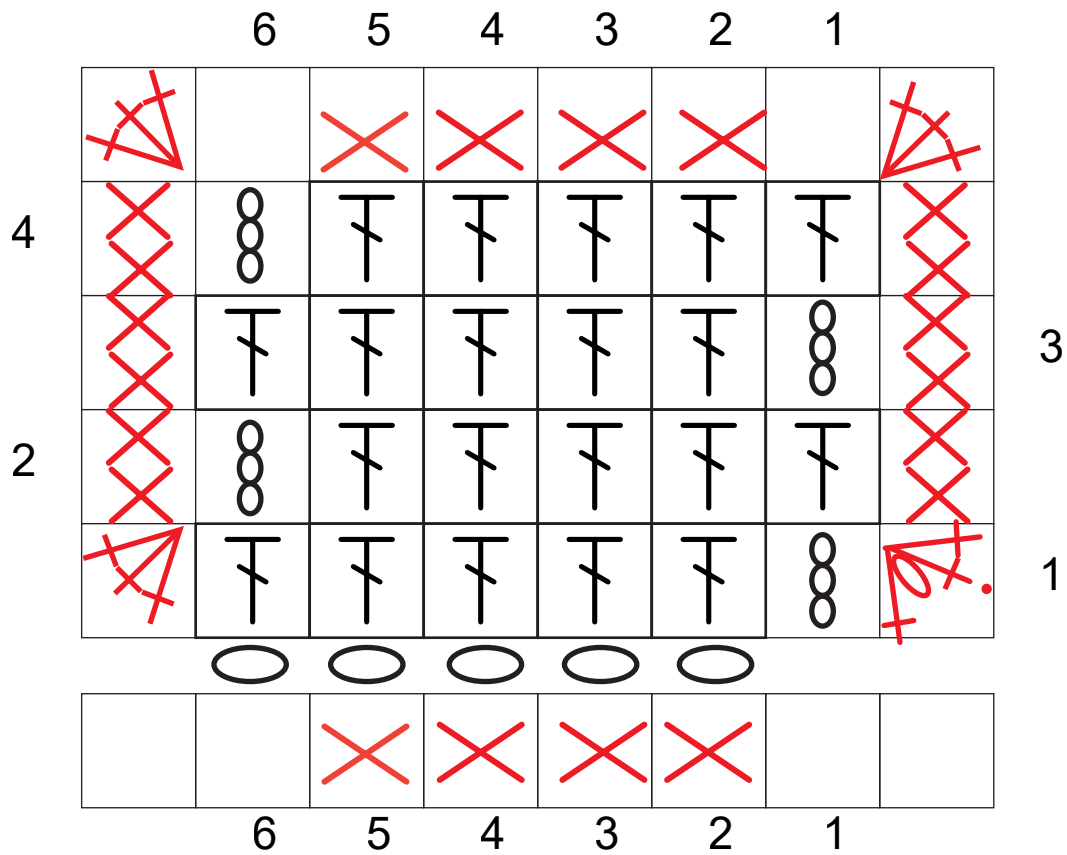
Side 2 4 Dc (Sc) along row, Dc (Sc) 3Inc in corner space.

Side 3 Work 2 Dc (Sc) in side of each row, until the next corner. Work Dc (Sc) 3Inc in corner space.

Side 4 4 Dc (Sc) along foundation chain, 1 Dc (Sc) in same space as the beginning 2 Dc (Sc) .

# Treble (Double) Crochet Border Swatch

The red symbols represent border stitches. Join the yarn in row 1 and chain 1 to start the border.



Dc (Sc) - Double (Single) Crochet

Tr (Dc) - Treble (Double) Crochet

Chain

3 Dc (Sc) Increase

Slst (SS)